

WEBBY SGABELLO

Design C. Ballabio

SEDIA | CHAIR

2016



WEBBY SGABELLO

Design C. Ballabio

SEDIA | CHAIR

2016

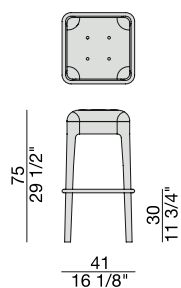
Sgabello con struttura in massello di noce canaletta e seduta con lavorazione capitonné nei tessuti della collezione. Poggiatesta in acciaio inox. Possibilità di ordinare i bottoni tono su tono o in contrasto.

Stool with frame in solid canaletta walnut and seat with capitonné decoration upholstered in the fabric of the collection. Footrest in stainless steel. The buttons could be ton sur ton or in contrast.

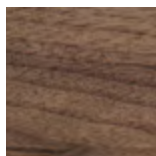
Hocker mit Gestell aus massivem Nussbaum Canaletta und Sitz mit Capitonné in den Stoffen der Kollektion. Fußstütze aus Edelstahl. Mit der Möglichkeit die Knöpfe im selben Stoff oder in einer Kontrastfarbe zu bekommen.

Tabouret avec structure en noyer canaletta massif et assise avec capitonné dans les tissus de la collection. Repose-pieds en acier inoxydable. Les boutons peuvent être ton sur ton ou en contraste.

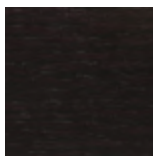
Taburete con estructura en nogal canaletta macizo y asiento con decoración capitonné en las telas de la colección. Descansapiés en acero inoxidable. Posibilidad de pedir los botones en la misma tela del asiento o en contraste.



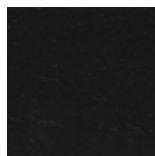
Essenze | Wood



Noce canaletta
Canaletta walnut

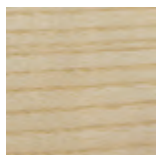


Noce canaletta
tinto moka
Canaletta walnut
moka stained



Noce canaletta
tinto wengè
Canaletta walnut
wengè stained

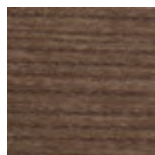
Essenze | Wood



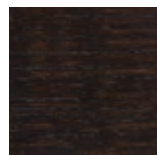
Frassino naturale
Natural ash



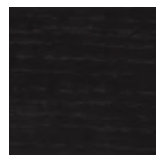
Frassino
tinto canapa
Ash canapa stained



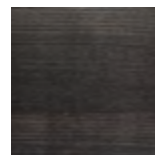
Frassino
tinto noce canaletta
Ash canaletta walnut
stained



Frassino
tinto moka
Ash moka stained

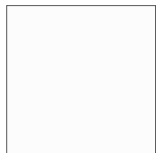


Frassino
tinto wengè
Ash wengè stained

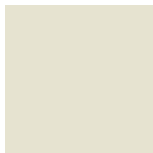


Frassino
tinto grigio
Ash grey stained

Laccato opaco poro chiuso | Matt Lacquered closed pore



Bianco
White
(RAL 9016)



Avorio
Ivory
(RAL 1013)



Argilla
Argilla
(RAL 7006)



Cioccolato
Chocolate
(RAL 8019)



Nero
Black
(RAL 9005)

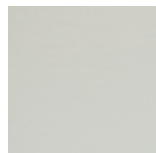


Iron
Iron
(RAL 7011)



Granata
Granata
(NCS S4050Y90R)

Laccato opaco poro aperto | Matt Lacquered open pore



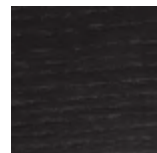
Bianco
White
(RAL 9016)



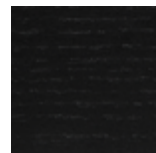
Avorio
Ivory
(RAL 1013)



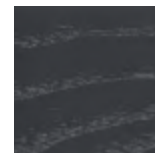
Argilla
Argilla
(RAL 7006)



Cioccolato
Chocolate
(RAL 8019)



Nero
Black
(RAL 9005)



Iron
Iron
(RAL 7011)



Granata
Granata
(NCS S4050Y90R)

WEBBY SGABELLO

Design C. Ballabio

SEDIA | CHAIR

2016

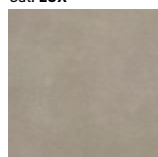
Metallo | *Metal*



Acciaio Inox
Stainless Steel

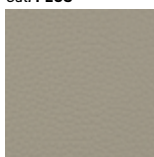
Pelle | Leather

Cat. LUX



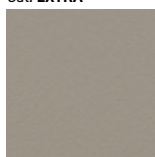
Nabuk

Cat. PLUS



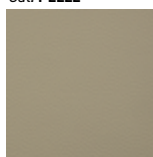
Pelle PLUS

Cat. EXTRA



Pelle EXTRA

Cat. PELLE



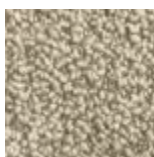
Pelle

Rivestimento | Cover

Cat. A

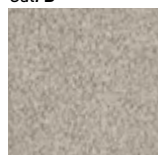


Twist

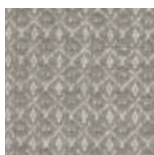


Zante

Cat. B



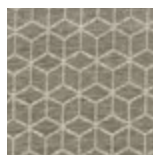
Bouclage



Motley

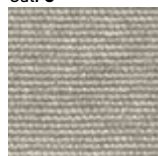


Tammy



Rabat

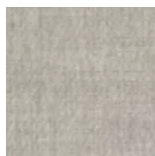
Cat. C



Armam



Ikat



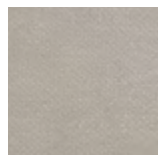
Lint



Loom



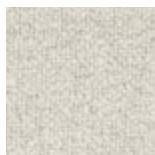
Madras



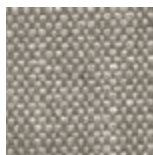
Moleskin



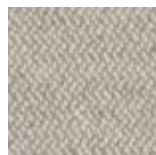
Moran



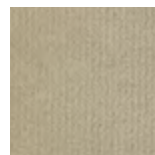
Patch



Silesia

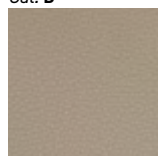


Serge



Velvet

Cat. D



Paros
eco leather

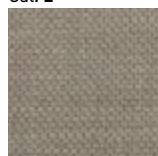


Range

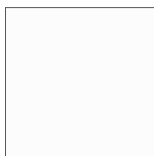


Tress

Cat. E



Dorian



In Bianco/Calico

Cat. COM

Disponibile con tessuto fornito dal cliente.

Available with fabric supplied by the customer.

Verfügbar mit Kundenstoff.

Disponibile avec tissu du client.

Disponibile con tela suministrada por el cliente.